



Operating instructions

Core drilling rig IDS352/V-PRO

BA-01-000012-01-EN

Scope of application

These Operating instructions only apply to the appliance labelled on the cover sheet.

Check the model using the rating plate on the appliance.

Original instructions / translation of the original instructions

In accordance with the EU Machinery Directive, the German copy of these Operating instructions is the original instructions.

Copies in other languages are translations of the original instructions.

Kernlochbohrer GmbH

Geigersbühlweg 52

72663 Großbettlingen

Germany

Phone: +49 (0)70 22 / 50 34 900

E-mail: info@kernlochbohrer.com

Internet: <http://www.kernlochbohrer.com>

© Kernlochbohrer GmbH

This documentation is protected by copyright.

All rights to this documentation, in particular the right of reproduction, distribution and translation, are reserved by Kernlochbohrer GmbH, even in the case of applications for industrial property rights. No part of this documentation may be reproduced in any form by any means, electronic or mechanical, or processed, duplicated or distributed using electronic systems without the express written permission of Kernlochbohrer GmbH.

Subject to errors and technical changes.

Kernlochbohrer GmbH is not liable for any errors in this documentation. Liability for direct or indirect damages arising in connection with the delivery or use of this documentation is excluded to the extent permitted by law. Furthermore, Kernlochbohrer GmbH cannot be held liable for damages resulting from the infringement of patent and other rights of third parties.

The function of the machine is limited to the functions described in the associated technical documentation.

Table of contents

1	Information and support	6
1.1	Thanks to the buyer.....	6
1.2	Using the Operating instructions	6
1.3	Changes	6
1.4	Explanation of symbols	7
1.5	Guarantee	7
1.6	Environmental protection.....	8
1.6.1	Disposal of the product.....	8
1.6.2	Disposal of the packaging	8
1.7	Service	9
2	Security.....	10
2.1	General information.....	10
2.2	Intended use.....	10
2.3	Safety regulations for the operator	11
2.3.1	Organisational safety measures	11
2.3.2	Changes to the device.....	11
2.3.3	Spare parts	12
2.3.4	Personnel.....	12
2.4	Safety regulations for staff.....	13
2.4.1	Safe behaviour.....	13
2.4.2	Safe operation	14
2.4.3	Protective equipment.....	15
2.5	Safety during maintenance.....	16
2.5.1	General information	16
2.5.2	Cleaning.....	16
3	Technical data	17
4	Device description	18
4.1	Device components.....	18
4.2	Scope of delivery.....	20

5	Use of the device.....	21
5.1	Specific precautions	21
5.2	Commissioning.....	22
5.3	Optical inspection	22
5.4	Secure the feed carriage on the guide stand	23
5.5	Attaching the Core drilling rig	24
5.5.1	Fastening with screws	24
5.5.2	Fastening by vacuum	26
5.6	Attach the fastening adapter to the Core drilling machine	28
5.7	Attaching the Core drilling machine to the Core drilling rig	29
5.8	Align drilling system.....	30
5.9	Use drilling system	31
5.10	Dismantling and storing the Core drilling rig.....	33
6	Maintenance.....	34
6.1	Notes on proper maintenance.....	34
6.2	Maintenance and inspection plan.....	34
6.3	Inspection and maintenance	35
6.3.1	Clean Core drilling rigs and check.....	35
7	Troubleshooting.....	37
8	Spare parts	38
9	EU Declaration of Conformity	40

1 Information and support

1.1 Thanks to the buyer

Thank you for purchasing a device from Kernlochbohrer GmbH.

Please read the Operating instructions carefully and observe the safety instructions. By following the Operating instructions, you will be able to fully utilise the outstanding performance of our product.

If you have any questions regarding the operation of the device, please contact Kernlochbohrer GmbH directly. We are available to answer your questions at any time.

1.2 Using the Operating instructions

The appliance is intended for professional use and may only be operated by trained personnel. Strictly adhere to the instructions in the Operating instructions.

Our company declines all responsibility in the event of non-compliance with the Operating instructions, which may result in injury or damage to property.

The Operating instructions are indispensable for using the appliance. The Operating instructions must therefore always be kept close to the appliance and be accessible to the intended personnel at all times.

In addition to the Operating instructions, the generally applicable and local regulations for accident prevention and environmental protection must be provided; compliance with these regulations must be checked regularly.

1.3 Changes

Kernlochbohrer GmbH reserves the right to change the design and appearance of the products and their Operating instructions. Future changes to the Operating instructions will be made without prior notice.

1.4 Explanation of symbols



The symbol draws your attention to dangers that you must be aware of when carrying out the following work in order to avoid damage to yourself, other persons or property.



Cross-reference to another point in the Operating instructions.



Prerequisite for an action.



Action to be performed.



Behaviour of the device that is to be expected as a result of the preceding action.



Background information or reference to special features.

1.5 Guarantee

In accordance with Kernlochbohrer GmbH's general terms of delivery, a warranty period of 12 months applies for material defects in business transactions with companies (proof by invoice or delivery note).

Damage caused by natural wear and tear, overloading or improper handling is excluded.

Damage caused by material or manufacturer defects will be rectified free of charge by repair or replacement. Complaints can only be recognised if the device is sent to Kernlochbohrer GmbH undismantled

Wear parts are excluded from the warranty.

1.6 Environmental protection

1.6.1 Disposal of the product

Follow national regulations on environmentally friendly disposal and recycling of used appliances and accessories.

1.6.2 Disposal of the packaging

The packaging is made from recyclable materials. They must be disposed of in accordance with their labelling and municipal guidelines.

1.7 Service

Precise information and specific questions allow faults to be rectified quickly, make it easier to order spare parts and prevent incorrect deliveries.

Before contacting the service, please collect the following data first.

The model designation must be stated for all questions and orders. This information can be found on the rating plate of the appliance.

Further information is required in the event of faults:

Type and extent of the disorder, accompanying circumstances, suspected cause.

This is required when ordering spare parts:

Quantity and item number in the exploded view of these Operating instructions or item number (if known).

- ① You are welcome to send us photos when ordering spare parts or videos in the event of faults.

Contact details:

Kernlochbohrer GmbH

Geigersbühlweg 52

72663 Großbettlingen

Germany

Phone: +49 (0)70 22 / 50 34 900

E-Mail: info@kernlochbohrer.com

Internet: <http://www.kernlochbohrer.com>

2 Security

2.1 General information

The appliance has been built according to the state of the art and in compliance with the applicable laws, standards and safety regulations. Nevertheless, use of the appliance may result in danger to the user or third parties as well as damage to the appliance and other property.

The appliance may only be used if it is in perfect working order and in accordance with its intended use and in a safe and hazard-conscious manner.

If the appliance is damaged or malfunctions, take it out of operation immediately, secure it against use and repair it or arrange for it to be repaired.

2.2 Intended use

The device is intended exclusively for drilling concrete, reinforced concrete, stone, masonry and similar materials using a suitable Core drilling machine.

The appliance may only be used within the limits of its technical data. This information, for example power specifications and ambient conditions, can be found in the "Technical data" chapter.

Any other or additional use is considered improper use - risk of accident!
Kernlochbohrer GmbH is not liable for any resulting damage. The risk is borne solely by the operator.

Intended use also includes observing the operating instructions and complying with the prescribed maintenance intervals.

2.3 Safety regulations for the operator

2.3.1 Organisational safety measures

The Operating instructions must always be available to operating and maintenance personnel. They must therefore always be kept at the place of use of the appliance.

The regulations on accident prevention and environmental protection applicable at the place of use of the appliance must also be available. The operator of the appliance must regularly check that they are complied with.

The appliance must not be operated in potentially explosive atmospheres or in the vicinity of flammable liquids, gases or combustible dust.

All safety and danger notices on the appliance must be legible and must not be removed.

The protective equipment required to operate the appliance must be provided by the operator. The operator must ensure that the protective equipment is used properly by the personnel.

Operating and auxiliary materials, such as lubricants or cleaning agents, must be selected in such a way that the limit values for hazardous substances applicable at the place of use are complied with. The regulations for environmental protection and disposal applicable at the place of use must be complied with.

2.3.2 Changes to the device

The operator may not make any modifications to the device without written authorisation from Kernlochbohrer GmbH. If the operator carries out modifications without authorisation, the warranty becomes void. Kernlochbohrer GmbH is not liable for damage caused by unauthorised modifications.

2.3.3 Spare parts

Spare parts must comply with the properties defined by Kernlochbohrer GmbH. This is always guaranteed for spare parts supplied by Kernlochbohrer GmbH. Kernlochbohrer GmbH is not liable for damage caused by the use of unsuitable spare parts.

2.3.4 Personnel

All persons tasked with commissioning, operating and maintaining the appliance must have read and understood the Operating instructions beforehand.

The appliance may only be operated by persons who have been adequately instructed beforehand.

Maintenance of the appliance may only be carried out by persons who have completed the appropriate specialised training for this activity.

Minors are not permitted to work with the device. Young people over the age of 16 who are trained under supervision are exempt from this regulation.

2.4 Safety regulations for staff

2.4.1 Safe behaviour

All persons responsible for commissioning, operating and maintaining the appliance must have read and understood the Operating instructions beforehand.

The appliance may only be operated by persons who have been adequately instructed beforehand.

Maintenance of the appliance may only be carried out by persons who have completed the appropriate specialised training for this activity.

Minors are not permitted to work with the device. Young people over the age of 16 who are trained under supervision are exempt from this regulation.

Any work on or with the appliance that could jeopardise safety must be avoided.

All safety and danger notices on the appliance must be legible and must not be removed.

2.4.2 Safe operation

Operating the appliance requires the full concentration and ability of the personnel. Persons who are overtired, unable to concentrate or under the influence of alcohol, drugs or medication must not work on or with the appliance.

Persons who are not directly required to operate the appliance must maintain a sufficient safety distance from the appliance.

Before using the appliance, check that it is in perfect condition. If the appliance is damaged, it must not be used. Then secure the appliance against use and repair it or arrange for it to be repaired.

In order not to jeopardise the functionality and safety of the appliance, covers or other components of the appliance must not be removed.

Operating elements must not be operated thoughtlessly or wilfully. This could result in personal injury or damage to the appliance.

When using the appliance, staff must ensure that they stand securely and adopt an ergonomic posture.

The appliance must not be left unattended during use.

Never immerse the appliance in water.

The appliance must be cleaned regularly so that dirt does not accumulate. All operating elements and handles must be kept clean, dry and free of grease.

When the appliance is not in use, it must be parked in such a way that nobody is endangered. Secure the appliance against unauthorised use.

2.4.3 Protective equipment

Wearing protective equipment reduces the risk of injury:

- Safety shoes with non-slip sole and protective toe cap
- Cut-resistant and non-slip gloves
- Safety goggles according to standard EN 166 or face protection
- Safety helmet

If the noise emissions generated when using the appliance exceed the limits applicable to this workplace, suitable hearing protection must be worn.

Loose-fitting clothing, long hair or body jewellery can get caught on moving parts of the appliance!

Persons carrying out maintenance work on the appliance are obliged to wear the appropriate protective equipment required for this work.

2.5 Safety during maintenance

2.5.1 General information

Maintenance of the appliance may only be carried out by persons who have completed the appropriate specialised training for this activity.

The maintenance activities and intervals specified in the Operating instructions must be observed.

Workshop equipment appropriate to the type of work is required to carry out maintenance activities.

The following safety precautions must be taken before starting maintenance work:

- Position the device so that the surgical site is easily accessible.
- Set the device to the appropriate operating status.

After completion of maintenance activities:

- Assemble the appliance completely.
- If operating elements or safety devices have been removed, they must be refitted and their function checked.

Persons carrying out maintenance work on the appliance are obliged to wear the appropriate protective equipment required for this work.

2.5.2 Cleaning

Do not use any corrosive, harmful or environmentally damaging substances to clean the appliance. Dispose of cleaning agents in an environmentally friendly manner.

Under no circumstances should high-pressure cleaners, water jets or compressed air be used to clean the appliance.

3 Technical data

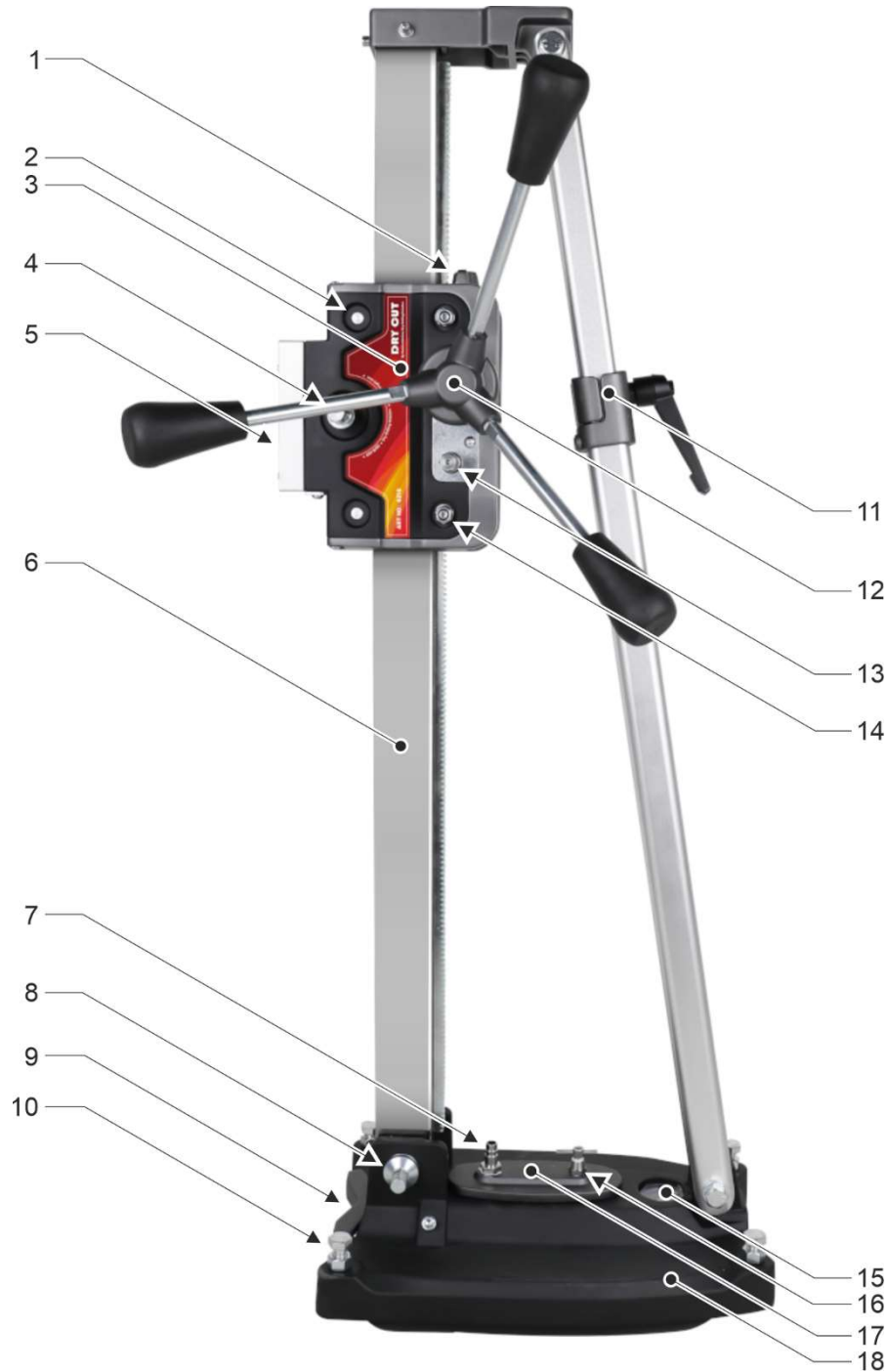
Article number	6218
Core drilling machine attachment	Mounting adapter
Maximum drilling diameter - screw fastening	352 mm
Maximum drilling diameter - Vacuum fastening	
	Floor 200 mm
	Wall 150 mm
Maximum feed length	670 mm
Adjustable drilling angle	0 to 45 degrees
Length	1000 mm
Width	380 mm
Depth	260 mm
Cross-section of the guide upright	50 x 50 mm
Weight	23.5 kg
Permissible ambient temperature	5°C to 40°C
Permissible relative humidity	30% to 80%
Compatible Core drilling machine	Kernlochbohrer SID352/PRO ① (item no. 6213) ②

① Alternatively, other Core drilling machine with 4x M8 thread with hole spacing 79 x 41 mm and keyway width 10 mm.

② The webshop <http://www.kernlochbohrer.com> is available for information and ordering.

4 Device description

4.1 Device components



Core drilling rig with vacuum adapter in base plate

- 1 Locking lever of the feed carriage
- 2 Fixed rollers of the feed carriage (4 pieces)
- 3 Feed slide
- 4 Locking screw of the mounting adapter
- 5 Mounting adapter for Core drilling machine
- 6 Guide stand with toothed rack
- 7 Hose connection
- 8 Clamping screw for base plate guide upright
- 9 Centring device for drill bit
- 10 Levelling screws with lock nuts (4 pieces)
- 11 Clamping the angle adjustment
- 12 Feed lever (attached to toothed shaft for slow feed)
- 13 Splined shaft for fast feed
- 14 Adjustable rollers of the feed carriage (4 pieces)
- 15 Pressure gauge
- 16 Ventilation valve
- 17 Vacuum adapter plate
- 18 Base plate



Base plate of the Core drilling rig fastened with threaded rod and disc wing nut



Wheel set attached to base plate

4.2 Scope of delivery

The scope of delivery of the device includes the following components:

- Core drilling rig
- Mounting adapter set for Core drilling machine
- Feed lever
- Chassis (two wheels and axle with retaining bracket)
- Double open-end spanner SW 17 and SW 19
- Double open-end spanner SW 22 and SW 24
- Allen key SW 4
- Allen key SW 5
- Operating instructions

① The accessories required to use the device, such as mounting kits etc., must be purchased separately.

Kernlochbohrer GmbH offers an extensive range of tools and accessories for the device. The webshop <http://www.kernlochbohrer.com> is available for information and ordering.

5 Use of the device

5.1 Specific precautions

- ① In these Operating instructions, the term drilling system is used for a Core drilling rig on which a Core drilling machine is mounted.

Before mounting the Core drilling machine on the Core drilling rig, make sure that the Core drilling rig is properly secured.

The Core drilling rig must be secured to a level and firm surface. Drilling work with a loose or wobbling Core drilling rig can lead to dangerous situations.



The Core drilling rig may only be used for wall or floor drilling by means of vacuum fastening.

Vacuum attachment of the Core drilling rig to the ceiling is prohibited, as failure of the attachment could result in death or serious injury to the persons involved.

When using the drilling system for drilling vertically upwards, a functional water collection ring must be used on the Core drilling machine. No water may get into the Core drilling machine.

Before starting the drilling process, the intended exit point of the drill bit must be inspected. The exit point must be secured and shut off. It must be ensured that no personal injury or material damage is caused by the escaping drill bit.


5.2 Commissioning

Before working with the Core drilling rig, the trolley supplied can be attached to it:

- Remove both cylinder screws with spring washers and washers from the back of the base plate.
 - Attach the running gear (two wheels with axle and retaining bracket) to the base plate using the cylinder screws, spring washers and washers.
- ① The Core drilling rig can now be tilted backwards for transport and pushed on its wheels.

5.3 Optical inspection

Before working with the Core drilling rig, it must be visually inspected:

- Check general condition and cleanliness.
 - Check that all covers and components are present.
 - Check that all screws are tight.
 - Feed carriage secured.
-  See chapter 5.4 "Secure the feed carriage on the guide stand".

5.4 Secure the feed carriage on the guide stand



Danger due to unintentional movement of the feed carriage!

The feed carriage must always be secured against unintentional movement (locking lever in "Tight" position).

If the feed carriage lock is cancelled (locking lever in the "Loose" position), the feed carriage can move downwards in an uncontrolled manner due to gravity and cause personal injury or damage to property.

Before releasing the feed carriage: Hold the feed carriage and Core drilling machine firmly and secure against falling!

The locking lever can be used to prevent the feed carriage from moving on the guide stand. This is achieved by a locking knob that engages with the splines of the toothed shaft and thus prevents adjustment.

If the locking lever is in the "Loose" position, the feed carriage can be moved using the feed lever.

If the locking lever is in the "Tight" position, the feed carriage is braked. This prevents the feed carriage and mounted Core drilling machine from falling due to gravity, even when the guide stand is in the vertical position.



If the locking lever is in the "Tight" position, the feed carriage must not be moved using the feed lever!

This would damage the locking mechanism and the gear rack on the guide stand.

5.5 Attaching the Core drilling rig



The Core drilling rig must be securely fastened in the desired position!



If the Core drilling rig is to be attached to the wall or ceiling, carry out this work in pairs.



Danger from unintentional movement of the feed carriage due to gravity!

The feed carriage must always be secured against unintentional movement.



See chapter 5.4 "Secure the feed carriage on the guide stand".



Fastening the Core drilling rig to the ceiling harbours particular risks due to gravity!



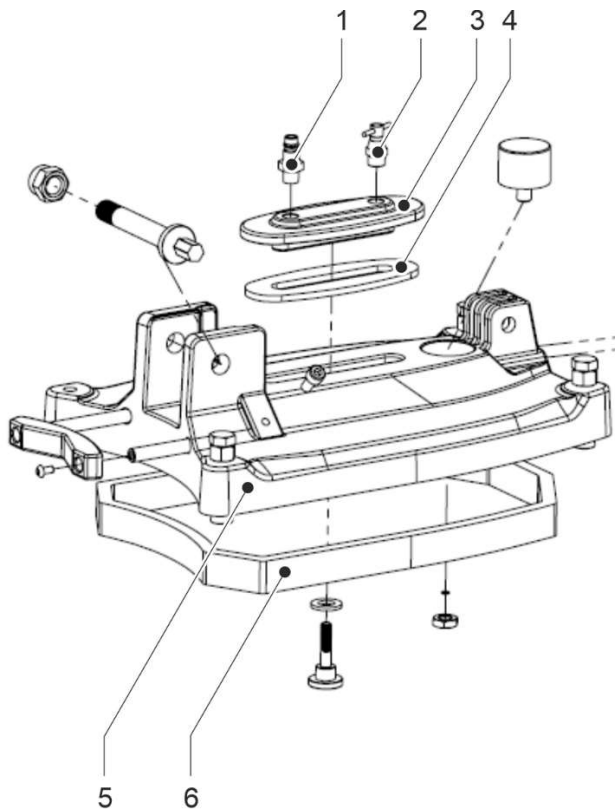
Kernlochbohrer GmbH recommends the use of the TBS3000PRO telescopic drill rig for ceiling drilling.

5.5.1 Fastening with screws

Auxiliary means:

- Hammer drill and corresponding drill bit
- Fastening set: metal dowel and threaded rod or threaded cord rod and disc wing nut
- ① A special masonry anchor must be used for a brick wall. The use of a concrete hammer-in anchor on a brick wall could lead to brick breakage and loosening of the anchor!

Procedure:



Preparing the Core drilling rig for fastening with screws

- 1 Hose connection
- 2 Ventilation valve
- 3 Vacuum adapter plate
- 4 Vacuum adapter seal
- 5 Base plate
- 6 Vacuum seal

- Remove the vacuum seal [6] on the underside of the base plate [5].
- Remove the vacuum adapter [1-4] from the base plate.
- Loosen the lock nuts on the levelling screws and turn the levelling screws all the way back.
- Drill a mounting hole of a suitable size using a hammer drill.
- To fasten the Core drilling rig, insert the groove of the base plate over the threaded rod or the screw of the fastening set and fix the Core drilling rig with the nut of the fastening set.

5.5.2 Fastening by vacuum



The maximum drilling diameter for vacuum fastening is:
200 mm for floor mounting
150 mm for wall mounting



The Core drilling rig may only be used for wall or floor drilling by means of vacuum fastening.

Vacuum attachment of the Core drilling rig to the ceiling is prohibited, as failure of the attachment could result in death or serious injury to the persons involved.

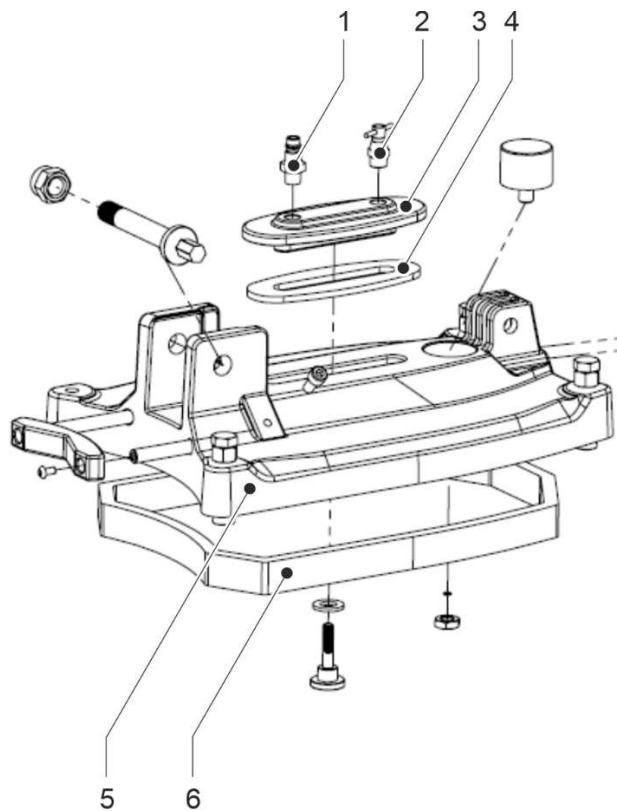


It must be ensured that the mounting surface is level and stable enough!

If wall or floor tiles are used as a mounting surface, they must adhere securely to the substrate!

Auxiliary means:


Ready-to-use vacuum pump with vacuum hose

Procedure:

Prepare Core drilling rig for vacuum fastening

- 1 Hose connection
- 2 Ventilation valve
- 3 Vacuum adapter plate
- 4 Vacuum adapter seal
- 5 Base plate
- 6 Vacuum seal

- Check the vacuum seal [6] for wear and damage.
The Core drilling rig must not be used if the vacuum seal is damaged!
If necessary, replace the vacuum seal or have it replaced.
- Insert the vacuum seal into the groove of the base plate [5].
- Insert the vacuum adapter [1-3] with vacuum adapter seal [4] into the groove on the top of the base plate.
- Close the ventilation valve of the vacuum adapter.
- Connect the vacuum hose of the vacuum pump to the hose connection of the vacuum adapter.

- ☒ Position the base plate at the drilling point.
For wall mounting: Hold the vacuum base plate in place continuously.
Ensure full-surface contact of the vacuum seal.
- ☒ Switch on the vacuum pump.
- ☞ The vacuum generated by the vacuum pump pulls the base plate onto the mounting surface.
-  The vacuum pump must not be switched off during further work!
- ☒ Observe the increase in negative pressure on the pressure gauge.
When the negative pressure has reached the minimum value of 0.7 bar:
Check that the Core drilling rig is securely fastened to the mounting surface
 - ① Conversion of the different units for pressure:
1 bar = 0.1 MPa = 100 kPa

5.6 Attach the fastening adapter to the Core drilling machine

The following components must be used to mount the mounting adapter on the Core drilling machine (included in the scope of delivery of the Core drilling rig):

- 4 pieces Cheese head screw M8x35
- 1 piece Parallel key 10x8x100

Prerequisites:

- ☒ Core drilling machine ready for operation.
- ☒ Core drilling machine power cable not connected to power supply.

Procedure:

- ☒ Attach the fastening adapter with cheese head screws and feather key to the interface of the Core drilling machine.

5.7 Attaching the Core drilling machine to the Core drilling rig

Prerequisites:

- Visual inspection of the Core drilling rig carried out.
- Core drilling rig securely fastened.
- Fastening adapter attached to the Core drilling machine.
- Core drilling machine power cable not connected to power supply.

Procedure:



Danger from unintentional movement of the feed carriage due to gravity!

The feed carriage must always be secured against unintentional movement.



See chapter 5.4 "Secure the feed carriage on the guide stand".

- Set the feed carriage to an upper or rear position so that there is sufficient space for mounting the Core drilling machine.
- Secure the feed carriage against unintentional movement with a safety device.
- Unscrew the locking screw of the fastening adapter until the fastening adapter can be inserted into the holder on the feed slide of the Core drilling rig.
- Insert the fastening adapter into the holder on the feed carriage and secure with the locking screw.
- Check that the Core drilling machine is securely attached to the Core drilling rig.

5.8 Align drilling system

Set the drilling position:

- ① It may be necessary to loosen the fastening of the Core drilling rig slightly to adjust the drilling position (only if the Core drilling rig is fastened with screws).



Do not loosen the fastening of the Core drilling rig too much, otherwise the Core drilling rig could fall down!

To bring the drilling system into the correct drilling position:

- Loosen the lock nuts of the four levelling screws.
- Align the position of the Core drilling rig by turning the levelling screws. The levelling can be checked using the two spirit levels on the guide carriage.
- Tighten all lock nuts on the levelling screws.
- Check that the Core drilling rig is securely fastened again.

Set the drilling angle:

- Loosen the clamping screw for the base plate guide stand and the angle adjustment clamp.
- Set the desired drilling angle of the Core drilling rig.
- Tighten the clamping screw for the base plate guide stand and the angle adjustment clamp.



Do not overtighten the angle adjustment clamp, otherwise the tubes of the diagonal brace may be deformed.

5.9 Use drilling system

Prerequisites:

- ☑ Visual inspection of the drilling system carried out.
- ☑ Core drilling rig securely fastened.
- ☑ Core drilling machine attached to the Core drilling rig.
- ☑ Drilling system aligned.



For detailed information on using the Core drilling machine, see the Operating instructions for the Core drilling machine.

- ① The force required for the feed movement of the Core drilling machine is applied by manually turning the feed lever on the toothed shaft engaging in the toothed rack.

The upper splined shaft of the Core drilling rig has a gear ratio of 1:2 and is suitable for generating a slow feed speed.

The lower splined shaft has a ratio of 1:1. It can be used to quickly adjust the feed carriage.



If the locking lever is in the "Tight" position, the feed carriage must not be moved using the feed lever!

This would damage the locking mechanism and the gear rack on the guide stand.

Procedure:

Danger from unintentional movement of the feed carriage due to gravity!

The feed carriage must always be secured against unintentional movement.



See chapter 5.4 "Secure the feed carriage on the guide stand".

- ☒ Before starting the drilling process, check again that the drilling system is securely fastened.



If undefined movements of the Core drilling rig or the entire drilling system occur during the drilling process:

Interrupt the drilling process immediately and hold the drilling system!


Check the fastening of the Core drilling rig.

If the Core drilling rig cannot be securely fastened with the vacuum fastening, it must be screwed to the drilling point.

- ☒ Place the feed lever on one of the two toothed shafts.
- ☒ Hold the feed lever and release the feed carriage lock.
- ☒ Initiate the feed of the Core drilling machine by manually actuating the feed lever.

5.10 Dismantling and storing the Core drilling rig

Procedure:

- Drilling process completed.
- Core drilling machine separated from the Core drilling rig.
- Fastening adapter disconnected from the Core drilling machine.
- Dismantle the Core drilling rig:
 - Hold the Core drilling rig firmly and secure it against falling.
 - Loosen the screw connection of the Core drilling rig to the mounting surface.
- Or:
 - Switch off the vacuum pump and open the ventilation valve in the base plate. Disconnect the vacuum hose from the hose connection of the vacuum adapter.
- Clean the Core drilling rig and allow to dry completely.
 -  See chapter 6.3.1 "Clean Core drilling rigs and check".
- Set the Core drilling rig down vertically and secure it against falling over.
- Store the Core drilling rig in a dry, cool place protected from moisture and direct sunlight.
- Secure Core drilling rigs against unauthorised use.

6 Maintenance

6.1 Notes on proper maintenance

Insufficient or improper maintenance can cause malfunctions and impair the operational safety and service life of the appliance. Regular inspection and maintenance is therefore essential. We recommend that maintenance work is only carried out by trained personnel.

The contractually agreed warranty does not release the operator of the device from the obligation to maintain the device in accordance with the manufacturer's instructions from the time of commissioning. Kernlochbohrer GmbH is not liable for damage caused by a lack of maintenance.

6.2 Maintenance and inspection plan

The interval specifications refer to normal operating conditions. In more difficult conditions (heavy dust accumulation, etc.) and longer daily working times, the specified intervals must be shortened accordingly by the operator.

Only use the maintenance and inspection schedule as a guide! Be sure to follow the cross-references to the other chapters! They describe in detail how to carry out the individual tasks correctly and safely.

Interval	Category	Component	Activity	Chapter
1 day	Real time	Core drilling rig	Cleaning and testing	6.3.1

6.3 Inspection and maintenance

6.3.1 Clean Core drilling rigs and check



Do not use sharp sponges or metal objects to clean the appliance. These could damage the surface of the appliance.

Do not use high-pressure cleaners, water jets or compressed air to clean the appliance. The sharp water or air jet could damage the appliance.

Do not use any corrosive, harmful or environmentally damaging substances to clean the appliance.



Danger from unintentional movement of the feed carriage due to gravity!

The feed carriage must always be secured against unintentional movement.



See chapter 5.4 "Secure the feed carriage on the guide stand".


Interval:

1 day real time

Auxiliary means:

- Container with a mixture of water and mild detergent (e.g. washing-up liquid)
- Cloth and brush
- Water-resistant lubricating grease

Procedure:

- ☒ Clean the Core drilling rig of dust and dirt.
Use a damp cloth dipped in water mixed with a mild detergent.
- ☒ Dry the Core drilling rig completely or allow it to dry.
- ☒ Check the function of the safety device of the feed carriage on the guide stand.
 See chapter 5.4 "Secure the feed carriage on the guide stand".



If the feed carriage is locked, the feed carriage must not be moved using the feed lever!

This would damage the safety device and the rack on the guide stand.

- ☒ Check the play of the feed carriage on the guide stand:
To do this, release the feed carriage lock.
If the feed carriage has play on the guide stand, adjust the four adjustable rollers one after the other:
 - ☒ Secure the eccentric shaft (item 62 in the spare parts drawing) against turning using an Allen key.
 - ☒ Tighten the hexagon nut (item 63 in the spare parts drawing) of the adjustable roller by turning it clockwise.
 - ☞ Adjustable castor rests against the running surface of the guide upright again.Then check the play of the feed carriage on the guide stand again.
If the play of the feed carriage cannot be sufficiently reduced by adjusting the adjustable rollers, the four rollers must be replaced.
- ☒ Check that all screws and nuts on the Core drilling rig are tight. If necessary, tighten the screws and nuts.
- ☒ Apply a thin coat of water-resistant grease to the rack of the guide stand.

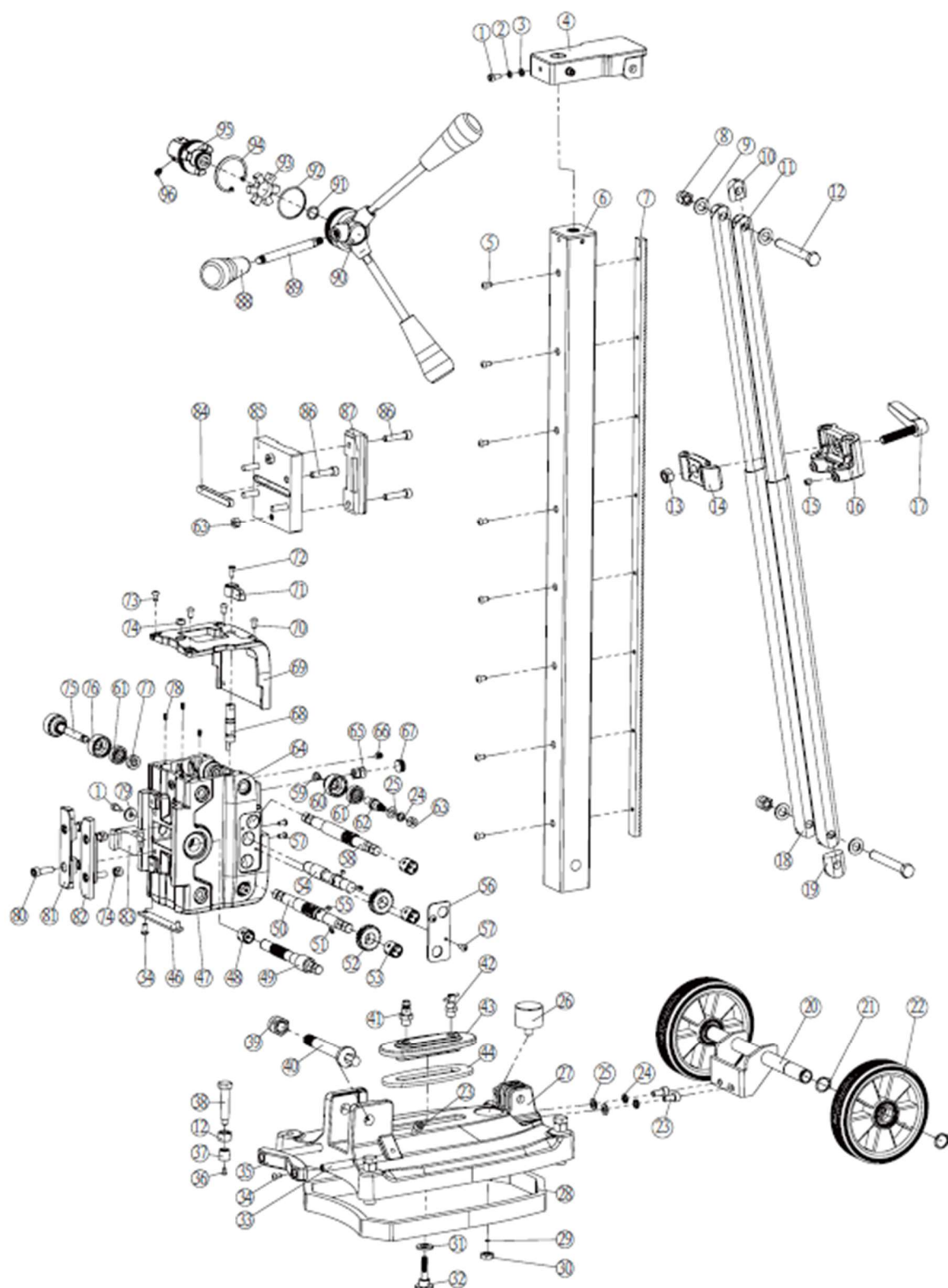
7 Troubleshooting

If a fault occurs during operation of the appliance, please first try to rectify the fault yourself using the following information.

If you are unable to rectify the fault yourself, please contact Kernlochbohrer GmbH.

Malfunction	Possible cause	Troubleshooting
Feed carriage wobbles	Wear and tear	Adjustable castors
Splined shaft is firmly seated	Fixed castors worn out	Replacing fixed castors
Splined shaft can be rotated freely	Toothed shaft and gear rack worn	Replace toothed shaft and gear rack
Safety device cannot secure feed slide	Safety device defective	Replacing the safety device
After replacing all the rollers, the movement of the feed carriage is still unreliable	Worn guide stand	Replacing the guide stand
Angle adjustment cannot be tightened	Clamping screw of the support too tight	Replace the support bracket at the rear of the feed carriage
Guide stand wobbles during the drilling process	Check connection between base plate and guide upright	Tighten the clamping screw.

8 Spare parts



Pos.	Article name	No.
1	Hexagon socket screw M6x12	4
2	Spring washer Ø6	3
3	Flat disc Ø6xØ10x1	3
4	Top cover	1
5	Round-head screw M6x8	8
6	Guide stand 49.5x49.5x1000	1
7	Toothed rack	1
8	Self-locking nut M12	2
9	Flat disc Ø12xØ20x1	4
10	Aluminium tube support core	2
11	Aluminium pipe clamp	2
12	Hexagon head screw M12x90	2
13	Hexagon nut M12	5
14	Clamping jaws	1
15	Flat head screw M8x8	2
16	Clamping piece	1
17	Clamping screw M12x40	1
18	Aluminium tube	2
19	Aluminium core	2
20	Bracket	1
21	Circlip Ø20	4
22	Rubber wheel with bearing	2
23	Hexagon socket screw M8x16	4
24	Spring washer Ø8	6
25	Disc Ø15xØ8.6x1	6
26	Vacuum pressure gauge	1
27	Base plate	1
28	Vacuum seal	1
29	O-ring Ø6x1	1
30	Nut G1/8	1
31	M16 disc	1
32	Base plate screw plug	1
33	Rod for centring	1
34	Hexagon socket screw M6x10	8
35	Centring jaw	4
36	Flat head screw M4x8	4
37	Doormat	4
38	Hexagon socket screw M12x55	1
39	Self-locking nut	1
40	Fixing bolt	4
41	Hose connection	1
42	Ventilation valve	
43	Vacuum adapter plate	1
44	Vacuum adapter seal	1
46	Tine connector	1
47	Bottom cover	1
48	Socket 16x20x16	1
49	Shutter shaft	1

Pos.	Article name	No.
50	Main splined shaft m=1.5 / z=11	1
51	M4x5 stop screw	4
52	Gear m=1.5 / z=23	
53	Socket	6
54	Output shaft	1
55	Parallel key 4x4x8	2
56	Cover plate	2
57	Hexagon socket screw M5x10	8
58	Gear shaft m=1.5 / z=11	1
59	Hexagon socket screw M6x8	4
60	Eccentric roller	4
61	Deep groove ball bearing 6000-2RZ	8
62	Eccentric shaft	4
63	Self-locking nut M8	10
64	Housing	1
65	Tooth piece	1
66	M8x10 screw	1
67	Screw plug M18x1.5	1
68	Pinion shaft	1
69	Housing	1
70	Hexagon socket screw M5x16	4
71	Lever	1
72	Hexagon socket screw M5x14	1
73	Hexagon socket screw M5x20	4
74	Dragonfly	2
75	Roller axle	2
76	Track roller	4
77	Spacer for outer wheel	4
78	Stop screw M5x10	6
79	Threaded locking sleeve	1
80	Cylinder head screw M8x25	4
81	Left wedge	1
82	Right wedge	1
83	Thread locking block	1
84	Parallel key 10x8x100	1
85	Mounting adapter	1
86	Hexagon socket screw M8x35	4
87	Pin terminal block	1
88	Handle with rubber coating	3
89	Connecting rod	3
90	Centre section of the feed lever	1
91	O-ring 23x2	1
92	O-ring 44x1.9	1
93	Rubber mat	1
94	Circlip	1
95	Plug	1
96	Fixing screw	3

9 EU Declaration of Conformity

The manufacturer/distributor

Kernlochbohrer GmbH
Geigersbühlweg 52
72663 Großbettlingen
Germany

hereby declares that the following product

Product description: **Core drilling rig**

Type: **IDS352/V-PRO**

was designed in accordance with Directive 2006/42/EU.

It is necessary that the Core drilling machine to be operated with this Core drilling rig fulfils the requirements described in the Operating instructions of the Core drilling rig (e.g. drilling diameter, machine mount).

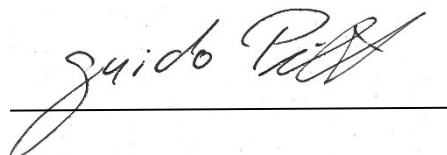
The drilling system may not be put into operation until it has been established that the Core drilling machine to be connected to the Core drilling rig complies with the provisions of Directive 2006/42/EU (recognisable by the CE mark on the Core drilling machine).

Name and address of the person authorised to compile the technical documentation:

Kernlochbohrer GmbH
Geigersbühlweg 52
72663 Großbettlingen
Germany

Großbettlingen 2025-03-28

Kernlochbohrer GmbH



Guido Pillat

Managing Director / Chief Executive Officer